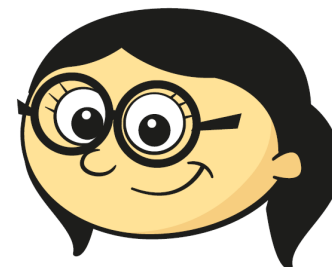


In a Year 6 survey 17 out of 30 children said strawberry was their favourite ice cream flavour.

This would be 170° on a pie chart.



False

There are 30 children in the survey.
There are 360° in a circle.

$360 \div 30 = 12$
so each person is represented by 12°

There are 17 children that prefer strawberry.
 $12^\circ \times 17 = 204^\circ$